



# CMTM1 Polyclonal Antibody

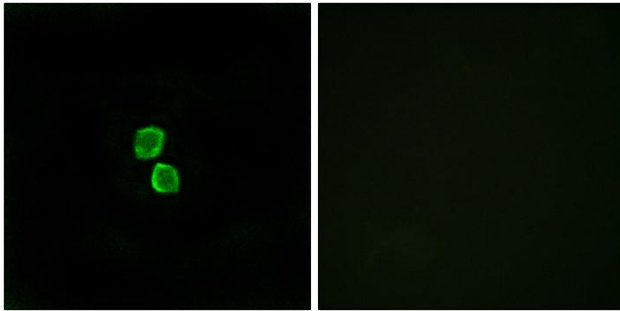
<b>Catalog No</b>	YP-Ab-15889
<b>Isotype</b>	IgG
<b>Reactivity</b>	Human;Rat;Mouse;
<b>Applications</b>	IF;ELISA
<b>Gene Name</b>	CMTM1
<b>Protein Name</b>	CKLF-like MARVEL transmembrane domain-containing protein 1
<b>Immunogen</b>	The antiserum was produced against synthesized peptide derived from human CKLF1. AA range:120-169
<b>Specificity</b>	CMTM1 Polyclonal Antibody detects endogenous levels of CMTM1 protein.
<b>Formulation</b>	Liquid in PBS containing 50% glycerol, 0.5% BSA and 0.02% sodium azide.
<b>Source</b>	Polyclonal, Rabbit,IgG
<b>Purification</b>	The antibody was affinity-purified from rabbit antiserum by affinity-chromatography using epitope-specific immunogen.
<b>Dilution</b>	Immunofluorescence: 1/200 - 1/1000. ELISA: 1/40000. Not yet tested in other applications.
<b>Concentration</b>	1 mg/ml
<b>Purity</b>	≥90%
<b>Storage Stability</b>	-20°C/1 year
<b>Synonyms</b>	CMTM1; CKLFSF1; CKLF-like MARVEL transmembrane domain-containing protein 1; Chemokine-like factor superfamily member 1
<b>Observed Band</b>	
<b>Cell Pathway</b>	Membrane; Multi-pass membrane protein.
<b>Tissue Specificity</b>	Highly expressed in testis.
<b>Function</b>	similarity:Belongs to the chemokine-like factor family.,similarity:Contains 1 MARVEL domain.,tissue specificity:Highly expressed in testis.,
<b>Background</b>	This gene belongs to the chemokine-like factor gene superfamily, a novel family that is similar to the chemokine and the transmembrane 4 superfamilies of signaling molecules. The protein encoded by this gene may play an important role in testicular development. Alternatively spliced transcript variants encoding different isoforms have been identified. Naturally occurring read-through transcription occurs between this locus and the neighboring locus CKLF (chemokine-like factor).[provided by RefSeq, Feb 2011],
<b>matters needing attention</b>	Avoid repeated freezing and thawing!



**Usage suggestions**

This product can be used in immunological reaction related experiments. For more information, please consult technical personnel.

**Products Images**



Immunofluorescence analysis of MCF7 cells, using CKLF1 Antibody. The picture on the right is blocked with the synthesized peptide.